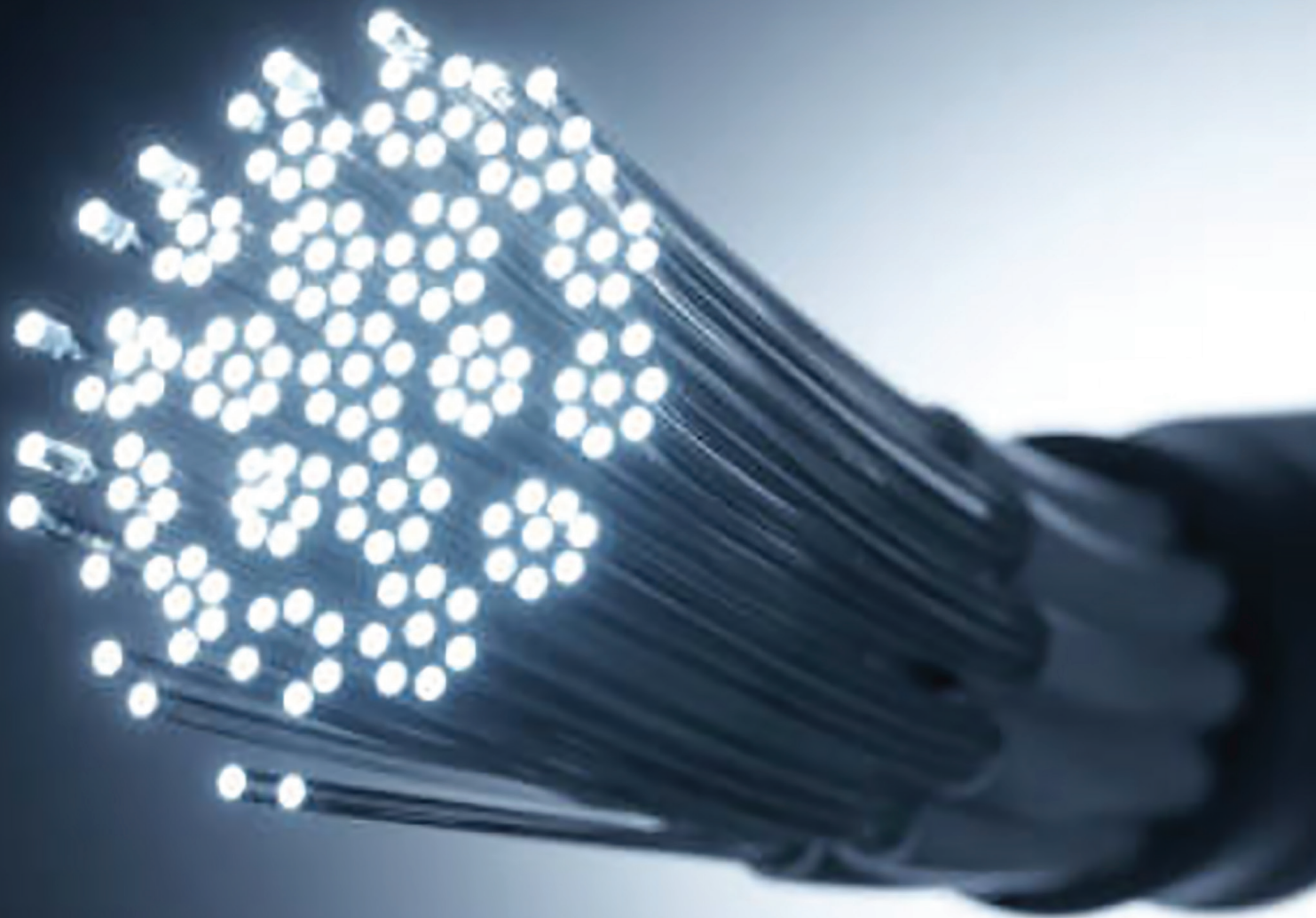


# MicroPath™

Microduct Piping System





## MicroPath™ Microduct Piping System

Recent improvements in fiber construction have made microducting and micro-cabling an economical option to traditional cabling products and provide a robust solution for upgrading today's aging infrastructure. MicroPath, United Poly Systems' exclusive Microduct piping system provides a full range of microducting and micro-cabling solutions.

Microduct is ideal for any application where traditional conduit installations occur. It is the best solution for upgrading or replacing existing communications infrastructure and is well suited for tight or constricted areas where there is no room for expansion or new installation of traditional cable. Applications include telecommunications providers, utility solutions, hospitals, utility and energy providers, transportation, entertainment, government facilities, corporate complexes, university campuses, military site applications and anywhere high-speed communications are needed.

### MicroPath Applications

- Utility System monitoring and controlling, and networked data communication.
- Broadband Network Fiber-to-the-home (FTTH), Fiber-to-the business (FTTB) and Fiber to the X (FTTX) or multiple destinations, providers using optical fiber to provide high speed service to end subscribers and long-haul, backhaul and premise fiber deployments
- Hospitals Secure the entire hospital network to stay current with advances in data-intensive medical technology and limits staff and patient disruptions.
- Education Adapts new communication technologies for campus environments and allows for interaction between outside organizations nationally and abroad for greater connectivity and collaboration. Promotes distance learning.
- Residential Helps with fiber installations to the home so developers can provide high-speed internet service to their customers while allowing for future upgrades.
- Government Fiber installation, additions and changes can be made quickly and enable segmented and secure networks in the same microduct configuration.

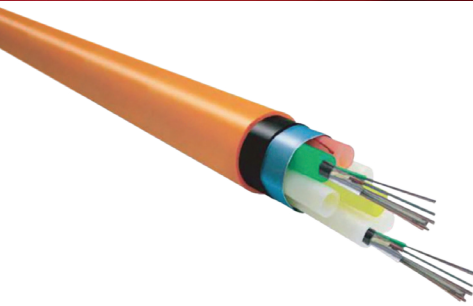


Microduct products may be installed in direct burial applications via micro-trenching or in microduct pathways via air blowing techniques or traditional cable pulling/pushing. Microducts future-proof networks since additional fiber cables can be placed at a later time in response to demand and capacity increases. Often additional microducts are installed and left open or vacant, providing pathways for future expansion. Alternatively, higher-density, higher-fiber count microcables can easily be pulled through existing conduit to replace conventional cabling.

## Advantages of Microduct over traditional cabling outlays

- Microduct products are easily and quickly installed in direct buried applications using minimally invasive micro-trenching equipment.
- Microduct pathways offer superior mechanical and environmental protection for lightweight microfiber optical cables, which can be easily installed using various air blowing techniques, or traditional cable pulling and/or pushing methods.
- Microduct pathway systems offer telecom carriers increased flexibility due to the ease at which service laterals and drops can be reconfigured and installed as customer demand increases.
- Small diameter microduct products are offered in a wide variety of configurations. This gives carriers the option to install microduct pathways into existing occupied conduits.
- Microducts help to future proof carrier networks as additional fiber cables can be placed at a later time as the demand for additional capacity increases. Whether for additional capacity or for general replacement, fiber optic cables are easily removed and replaced with high-density, higher-fiber count cables.
- Riser-rated microduct products provide safe, flexible, lightweight, durable and easy to-install pathways to deploy bare fiber and microfiber cables inside a multi-dwelling unit (MDU) or commercial building.



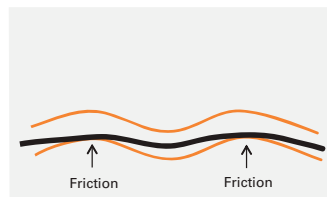


## Microduct Fiber Pathway

Microduct fiber pathways provide a permanent installation that satisfies your immediate fiber communication requirements and leaves sufficient pathway for future expansions. Any moves, adds or changes in the fiber network are quickly accommodated utilizing the fiber pathway and accessories.

### Rapid, safe and smooth installation with air blowing methods (ABC)

ABC installations are done by an air blowing technique that reduces the risk of damage to the fiber cable, accelerates installation time and increases the installation distance.



Pulling



Blowing

### Microduct Selection Guidelines

Fiber Counts Installed	1-12C	24-72C	96-144C	216-288C
OD of Cable	1.0-2.0mm	3.2-5.8mm	6.8 - 8.0mm	8.4-9.2mm
Microduct Tube	3.5mm	8mm	10mm	12mm

Select the proper size microduct by using the Microduct Selection Guidelines table.

### Conventional Cable and Micro Cable Comparison

Fiber Counts	Weight (kg/km)		Max. Outer Diameter (mm)	
	Conventional Cable	Micro Cable	Conventional Cable	Micro Cable
24, 38, 72	110	30	11	5.8
96	208	40	14	6.8
144	257	50	16	7.8
216	342	65	18	8.4
288	342	90	18	9.2

Cable's OD varies depending on cable brand.



## Various Applications

### If you have an under utilized conduit?

Direct install (DI) microduct can increase the fiber pathways available for your communication network in your existing conduit. Direct install microduct provides the needed pathway for current fiber cable requirements while allowing for the ease of future fiber moves, adds or changes.

### Planning or designing new fiber networks?

Direct bury DB microduct is available in 5/3.5, 8/6,10/8 and 12/10 mm sizes for rapid installation that satisfies both conduit and pathway in one simple installation. This cost effective solution provides for today's needs and allows for future rapid expansion.

### Do you want to limit traffic disruptions?

A pronounced benefit of micro trenching is that the process results in minimal traffic disruption, time and material savings and provides higher bandwidth to their customers.

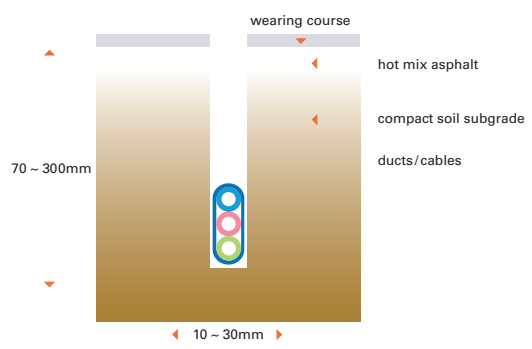
### Numerous styles and sizes available:

Direct Bury, Direct Install, Thick Walled Flat Duct, LSZH, Riser, and Aerial in mm sizes 5/3.5, 8/6, 10/8 and 12/10 and Thick Walled 7/3.5,10/6,12/8, 14/10, 16/12, 18/14, and larger size and custom configurations on request



### Micro Trenching

- 70-300 mm depth/10-30 mm width
- By dedicated equipment
- Wet cut with Diamond tipped wheel
- Backfill with grout or hot/cold asphalt
- Fast and inexpensive as well





## DB (Direct Bury)

The outer sheath is rugged high density polyethylene (HDPE) providing excellent protection from the physical environment. An aluminum or non-metallic layer is added to provide additional strength which results in crush and impact resistance

Primary Duct Dimensions OD/ID (mm)	Outside Dimensions H x W (mm)						
	1 Way	2 Way	4 Way	7 Way	12 Way	19 Way	24+1 Way
5/3.5mm	12.4	12.4X17.4	19.5	22.4	28.3	32.3	37.9
8/6mm	15.4	15.4X23.4	28.1	32.8	41.2	48.8	56.01
10/8mm	17.4	17.4X27.4	32.9	38.8			
12/10mm	19.4	19.4X31.4	37.8	44.8			

- Silicone coated ducts
- Available water blocking tape (aluminum or fabric) installed
- Two layer of sheath
- Available tracer wire, ripcords installed



## DI (Direct Install)

The microducts are surrounded by a layer of moisture-barrier metallic or non-metallic tape and a flexible sheath of black HDPE. DI ducts can be installed in pre-existing pipes or sub-ducts.

Primary Duct Dimensions OD/ID (mm)	Outside Dimensions H x W (mm)						
	1 Way	2 Way	4 Way	7 Way	12 Way	19 Way	24+1 Way
5/3.5mm	8.4	8.4 X13.4	15.5	18.4	23.7	27.7	33.3
8/6mm	11.4	11.4X19.4	23.1	27.8	36.2	43.8	51.01
10/8mm	13.4	13.4X23.4	27.9	33.8			
12/10mm	15.4	15.4X27.4	32.8	39.8			

- Silicone coated ducts
- Available water blocking tape (aluminum or fabric) installed
- Available tracer wire, ripcords installed



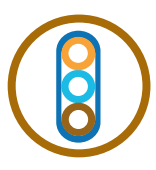
## TW (Thick Wall)

Thick Walled Microduct is designed for direct burial. Its superior blowing characteristics and sufficient thickness of the sub duct Walls often results in no additional protective ducts required.

Thick walled microducts can be branched off easily and the primary tube can be directly buried as a single microduct. All TW duct are silicone coated. Available tracer wire, ripcords installed.

Primary Duct Dimensions OD/ID (mm)	Outside Dimensions H x W (mm)								
	1 Way	3 Way	4 Way	5 Way	6 Way	7 Way	12 Way	19 Way	24+1 Way
7/3.5mm	9	15.1X16	16.9X16	15.1X16	19.5X21.1	21.1X23	27.2X30	33.2X37	43.6
10/6mm	12	20.7X22	22X22	27.4X28.2	27X29.3	29.3X32	42X37.98	52X46.64	
12/8mm	14	24.4X26	26X26	24.4X38.0	32X34.8	34.8X38			
14/10mm	16	28.1X30	30X30	28.1X44	37X40.2	40.2X44.0			

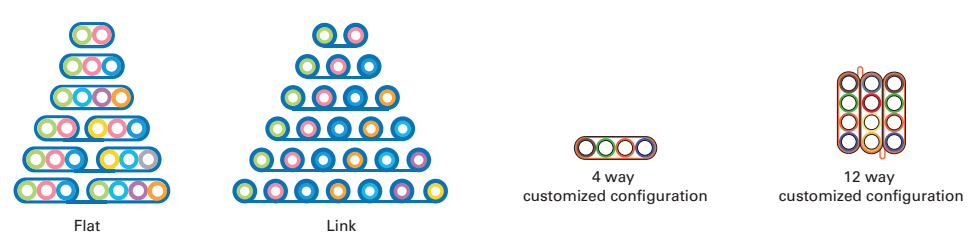




## Flat Duct and Link Duct

Flat duct and link duct with thick wall is perfectly suitable for micro trenching with proper narrow width and shallow depth. All flat duct are silicone coated. Large duct size is available with folded type or linked type

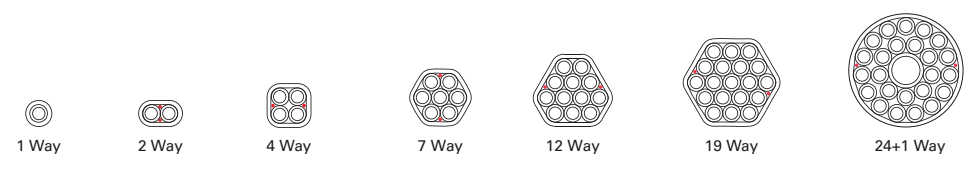
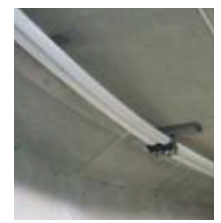
OD/ID	2 Way		3 Way		4 Way		5 Way		6 Way		7 Way	
7/3.5mm	F		F		F		F		F		F	
10/6mm	F		F		F		F		F		F	
12/8mm	F	L	F	L	F	L	F	L	F	L	F	L
14/10mm	F	L	F	L	F	L	F	L	F	L	F	L
16/12mm	F	L	F	L	F	L	F	L	F	L	F	L
18/14mm	F	L	F	L	F	L	F	L	F	L	F	L
20/16mm	L		L		L		L		L		L	



## Indoor Application

LSZH, UL 2024 Riserr rated for indoor microduct installations that are placed in the building raceway.

Primary Duct Dimensions OD/ID (mm)	Outside Dimensions H x W (mm)						
	1 Way	2 Way	4 Way	7 Way	12 Way	19 Way	24+1 Way
5/3.5mm	7.4	7.4X12.4	12.4 X14.5	16.1X17.4	20.4X22.4	26.1X26.7	32.0X32.0
8/6mm	10.4	10.4X18.4	18.4X21.4	24.3X26.4	34.4X31.18	42.4X38.11	49.61X48.63
10/8mm	12.4	12.4X22.4	22.4X22.4	29.7X32.4			
12/10mm	15.4	15.4X27.4	32.8	39.8			



## Aerial

Aerial microduct has been developed to facilitate the use of optical fiber subscriber drop cable. All aerial duct are silicone coated.

High UV resistance for outdoor use

- Metal strength member and metal-free versions available
- Custom microduct configurations and colors available upon request.



## Accessories

A complete array of accessories are available to fulfill your fiber pathway needs including: couplers, end caps, reducers, tube branching units, and tube distribution enclosures.

### Couplers

Straight, gas blocking, reducers, DBL connectors and end caps



### Tube Distribution Closure

Waterproof enclosures designed for blown fiber microduct connections Branch enclosures provide fast branching for microduct and air brown cable including in-line, T, Y and H enclosures.



T Branch Unit



Tube Distribution Closure



Y Branch Unit

### Tools

Duct, round and tube cutters and slitters



Tube Cutter



Duct Cutter